



## 2.0t 254HP L4 Petrol Chery Car Tiggo 8 PRO Car 7 Seater Gasoline Utility Vehicle

Our Product Introduction

for more products please visit us on [evs-autos.com](http://evs-autos.com)

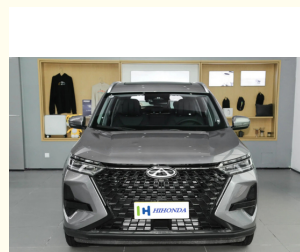
### Basic Information

- Place of Origin: China
- Brand Name: Chery
- Model Number: Tiggo 8 pro
- Minimum Order Quantity: 1 unit
- Price: USD:13500\$~23000\$
- Delivery Time: 30~45days
- Payment Terms: T/T, Western Union



### Product Specification

- Highlight: 2.0t chery car tiggo 8 pro,  
L4 chery car tiggo 8 pro,  
Gasoline chery tiggo 8 pro 7 seater



### More Images



Our Product Introduction

### Product Description

Basic parameters	
Manufacturer	Chery Auto
level	midsize SUV
energy type	gasoline
Environmental standards	Euro VI
time to market	2024.05
Maximum power (kW)	187
Maximum torque (N·m)	390
engine	2.0T 254hp L4
gearbox	7-speed wet dual clutch
L*W*H(mm)	4745*1860*1745
Body structure	5 door 5/7 seat SUV
Maximum speed (km/h)	210
Official 0-100km/h acceleration (s)	-
WLTC comprehensive fuel consumption (L/100km)	7.89
Length(mm)	4745
Width(mm)	1860
Height(mm)	1745

for more products please visit us on [evs-autos.com](http://evs-autos.com)

Wheelbase(mm)	2710
Front track(mm)	1582
Rear Track(mm)	1604
approach angle(°)	19
departure angle(°)	18
Body structure	SUV
Door opening method Swing door	
Number of doors (pcs)	5
Number of seats (pieces)	7
Fuel tank volume (L)	-
Trunk volume (L)	193-1930
Curb weight (kg)	1741
Maximum full load mass (kg)	2277
ENGINE	
engine model	SQRF4J20
Displacement (mL)	1998
Displacement (L)	2
Intake form	turbo
engine layout	tap
Cylinder arrangement	L
Number of cylinders (pcs)	4
Number of valves per cylinder (pcs)	4
Air Supply	DOHC
Maximum horsepower (Ps)	254
Maximum power (kW)	187
Maximum power speed (rpm)	5500
Maximum torque (N·m)	390
Maximum torque speed (rpm)	1750-4000
Maximum Net Power (kW)	180
fuel form	gasoline
fuel label	No. 92
Oil supply method	direct injection
Cylinder material	Aluminum alloy
Environmental standards	Euro VI
GEARBOX	
Number of gears	7
Transmission type	Wet Dual Clutch Transmission (DCT)
short name	7-speed wet dual clutch
drive mode	Front four-wheel drive
Chassis steering	
Four-zone format	Timely four-wheel drive
The structure of the central accelerator	multi-plate clutch
Front breather type	McPherson independent suspension
rear suspension type	Multi-link independent suspension
boost type	Electric assist
body structure	load bearing
Front brake type	ventilated disc
rear brake type	disc
Parking brake type	Electronic parking
Front tire specification	235/50 R19

Detailed Photos


--



Hefei Haihongda Car Import & Export Limited Company



15755139789



15755139789@139.com



evs-autos.com

808, BlockA, HuabangWorld Trade City, administrativedistrict, HefeiCity, Anhui Province